



## **FOR RENT : OFFICE**

Grande Rue 34 | 1347 Le Sentier | Reference : 1411

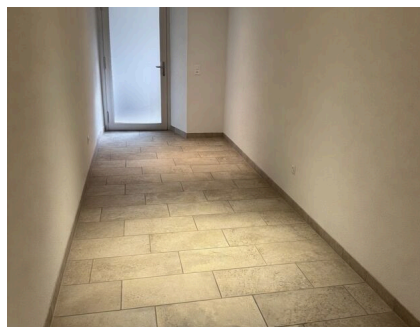
**CHF 1,800.-/month + ch.**

## TABLE OF CONTENTS

Description page	3
Detailed characteristics and conveniences	4
Big pictures	5

## FOR RENT : OFFICE

CH-1347 Le Sentier | Grande Rue 34 | **CHF 1,800.-/month + ch.**



The space is located on the lower ground floor, with two direct entrances and exceptional condition, requiring no renovation work. A private hall leads your visitors into a beautiful reception area, which opens onto an office on one side and two offices in a row or with independent access on the other. WC and small break area. A terrace can also be rented for breaks!

In the same building, you'll find: A bakery-restaurant, a large kiosk, and many amenities are very close to this space, such as: commune offices, stores on Grande Rue, train station, Coop, Migros, and to a very wide range of leisure activities, including a super sports center with indoor pool, as well as museums and a cinema.

Rent this office space from 1'800 CHF/month. Located at Grande Rue 34, this is a unique opportunity for a growing company. Don't miss this opportunity to benefit from a strategic location and a stimulating environment for your business.

Book now to get your project off to a great start!

### CHARACTERISTICS

Reference: **1411**

Type: **Office**

Availability: **01.06.2026**

Useful surface: **~ 104 m<sup>2</sup>**

Charges: **CHF 240.-/month (Instalment)**



## CHARACTERISTICS

CH-1347 Le Sentier | Grande Rue 34 | **CHF 1,800.-/month + ch.**

### CHARACTERISTICS

Availability	<b>01.06.2026</b>	Charges	<b>CHF 240.-/month (Instalment)</b>
Type	<b>Office</b>	Useful surface	<b>~ 104 m<sup>2</sup></b>
Reference	<b>1411</b>		

### CONVENIENCES

#### NEIGHBOURHOOD

- City centre
- Shopping street
- Railway station
- Bus stop
- Sports centre
- Public swimming pool
- Tennis centre
- Ski resort
- Indoor swimming pool
- Ski lift
- Museum
- Theatre
- Concert hall
- Hospital / Clinic
- Near customs

#### OUTSIDE CONVENIENCES

- Terrace/s
- Ground level access

#### CONDITION

- Very good

## INTERIOR VIEW





## PICTURE(S)

