



CHEZ LE MAÎTRE 1

chez le Maître 1 | 1347 Le Sentier | Reference : 100

TABLE OF CONTENTS

Description page	3
Page location and distances	4
Detailed characteristics and conveniences	5
Big pictures	7
Objects table	10

CHEZ LE MAÎTRE 1

CH-1347 Le Sentier | chez le Maître 1



CONTACT FOR VISITING

Rent department
E-mail : gerance@stalder-immobilier.ch
Tel. : 021 841 10 44

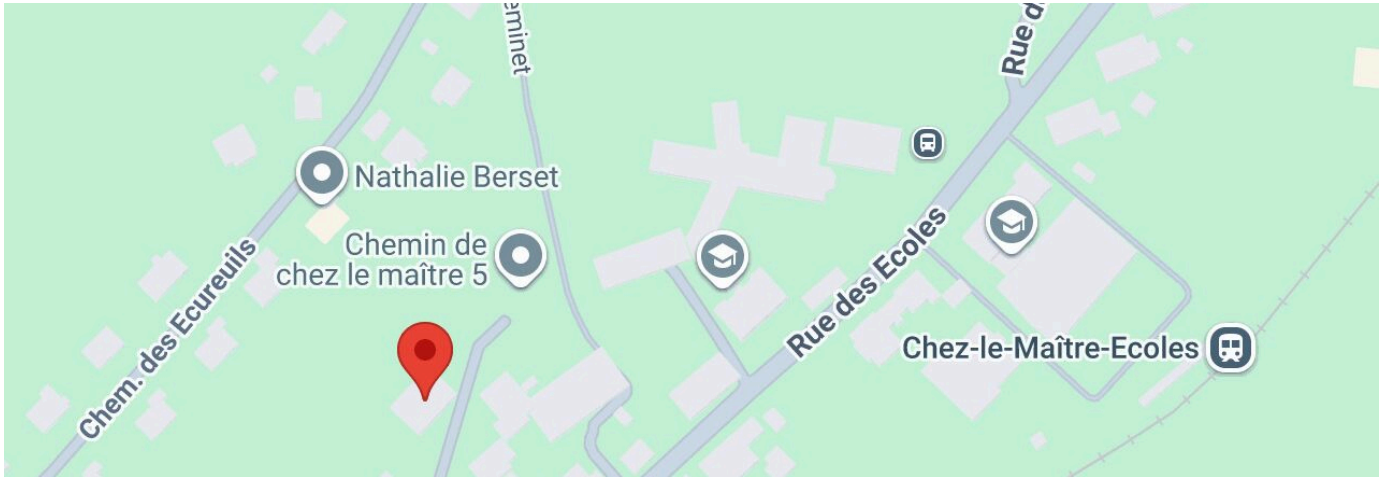
CHARACTERISTICS

Reference: **100**
Type: **Residential projects**
Availability: **To agree**
Year of construction: **2017**



LOCATION

CH-1347 Le Sentier | chez le Maître 1



				
Public transports	216 m	5 min.	5 min.	1 min.
Stores	1.2 km	19 min.	7 min.	3 min.
Hospital	372 m	11 min.	11 min.	2 min.
Restaurants	934 m	16 min.	16 min.	3 min.

CHARACTERISTICS

CH-1347 Le Sentier | chez le Maître 1

CHARACTERISTICS

Availability	To agree	Year of construction	2017
Type	Residential projects	Gross living area	Starting at ~ 20 m²
Reference	100		

CONVENIENCES

NEIGHBOURHOOD

- | | | |
|------------------------|---------------------------|---------------------|
| - Village | - Ski piste | - Museum |
| - Railway station | - Ski lift | - Theatre |
| - Public swimming pool | - Cross-country ski trail | - Hospital / Clinic |
| - Sports centre | - Hiking trails | - Doctor |
| - Tennis centre | - Ice rink | |

OUTSIDE CONVENIENCES

- Parking

INSIDE CONVENIENCES

- | | | |
|-----------------------|----------------|------------------|
| - Wheelchair-friendly | - Open kitchen | - Double glazing |
| - Lift/elevator | - Cellar | - Bright/sunny |

EQUIPMENT

- | | | |
|-------------------------|--------------|------------------|
| - Furnished kitchen | - Oven | - Shower |
| - Fitted kitchen | - Dishwasher | - Electric blind |
| - Ceramic glass cooktop | - Laundry | - Interphone |

FLOOR

- Tiles

ORIENTATION

- | | | |
|---------|--------|--------|
| - North | - East | - West |
| - South | | |

EXPOSURE

- Favourable

VIEW

- Nice view

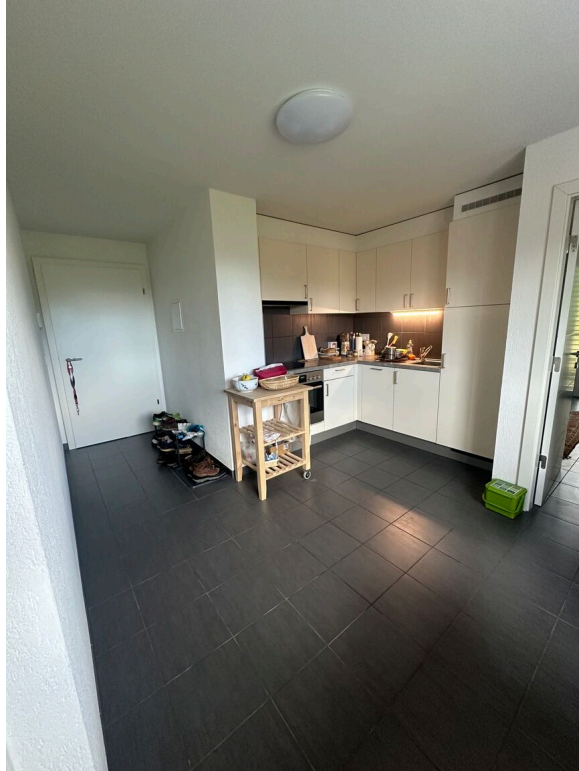
STYLE

- Classic

INTERIOR VIEW







Objects

Chez Le Maître 1
 1347 Le Sentier, chez le Maître 1

Reference	Type	Floor	Rooms	Living surface	Price	Status
21	Furnished apartment	Ground floor	1	~ 20.2 m ²	-	Rent
22	Furnished apartment	Ground floor	1.5	~ 32 m ²	-	Rent
23	Furnished apartment	Ground floor	1.5	~ 32 m ²	-	Rent
24	Furnished apartment	Ground floor	1	~ 20.2 m ²	-	Rent
31	Furnished apartment	1st floor	1	~ 20.2 m ²	-	Rent
32	Apartment	1st floor	2.5	~ 48.3 m ²	-	Rent
33	Apartment	1st floor	2	~ 33.6 m ²	-	Rent
34	Furnished apartment	1st floor	1	~ 20.1 m ²	-	Rent
35	Apartment	1st floor	2.5	~ 48.3 m ²	-	Rent
36	Furnished apartment	1st floor	1	~ 20.2 m ²	-	Rent
41	Furnished apartment	2nd floor	1	~ 20.2 m ²	-	Rent
42	Apartment	2nd floor	2.5	~ 48.3 m ²	-	Rent
43	Apartment	2nd floor	2	~ 33.6 m ²	-	Rent

Reference	Type	Floor	Rooms	Living surface	Price	Status
44	Furnished apartment	2nd floor	1	~ 20.1 m ²	CHF 530.-/month + ch.	For rent
45	Apartment	2nd floor	2.5	~ 48.3 m ²	-	Rent
46	Furnished apartment	2nd floor	1	~ 20.2 m ²	-	Rent
51	Furnished apartment	3rd floor	1	~ 20.2 m ²	-	Rent
52	Apartment	3rd floor	2.5	~ 48.3 m ²	-	Rent
53	Apartment	3rd floor	2	~ 33.6 m ²	CHF 800.-/month + ch.	For rent
54	Furnished apartment	3rd floor	1	~ 20.1 m ²	-	Rent
55	Apartment	3rd floor	2.5	~ 48.2 m ²	-	Rent
56	Furnished apartment	3rd floor	1	~ 20.1 m ²	CHF 600.-/month + ch.	For rent
81	Exterior parking	-	-	-	-	Rent
82	Exterior parking	-	-	-	CHF 60.-/month	For rent
83	Exterior parking	-	-	-	-	Rent

Reference	Type	Floor	Rooms	Living surface	Price	Status
84	Exterior parking	-	-	-	CHF 60.-/month	For rent
85	Exterior parking	-	-	-	-	Rent
86	Exterior parking	-	-	-	-	Rent
87	Exterior parking	-	-	-	-	Rent
88	Exterior parking	-	-	-	-	Rent